

**CRIME STOPPER CARELINE 0861 754 629**



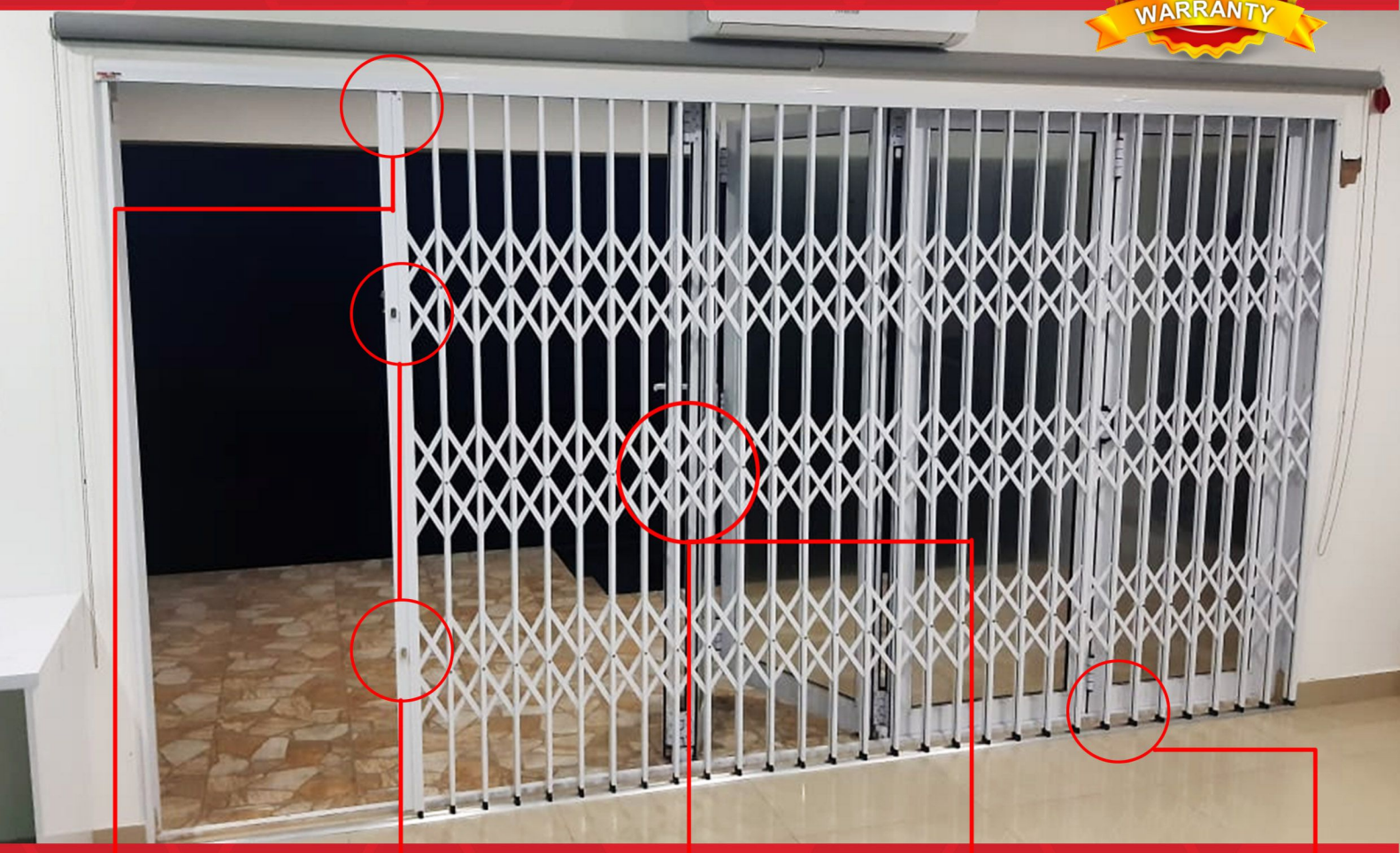
**PRODUCT BROCHURE**



**Limax Security Specialists**  
(PTY) Ltd

**LUXURY. LIFESTYLE. LIMAX**

# D14 SECURITY GATE ULTIMATE SECURITY



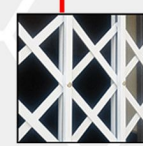
**Pocketed Top Tracks**



**Double Locking**



**Double Uprights  
14x14mm x 2**



**Double Braced Flights**



**Tuff Nylon Guides**

## Technical Data Sheet and Product Information

- Structure:** Hardened T6063 industrial grade Aluminium extrusion developed under *Limax Trade* and trademarked.
- Operation:** Expandable Trellis concept design - no metal on metal friction.
- Components:** 14x14mm Aluminium uprights, 16x3 Flat strip scissor X pattern, Nylon runners and rollers, Union Locks - 1 x Slam Lock & 1 x Dead Lock
- Strengths:** Double braced inter linked pattern to hold 3x3 uprights for extreme strength.
- Corrosion Properties:** Anodized and powder-coated Aluminium gives the D14 superior strength.
- Powder Coating Details:** 7 year Collocate warranty on paint. Guaranteed for 10 years!



Easy Sliding



No Rust



High Strength



10 Year Guarantee



Low Maintenance



Quality Powdercoated Finish

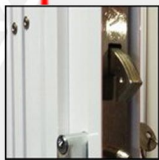
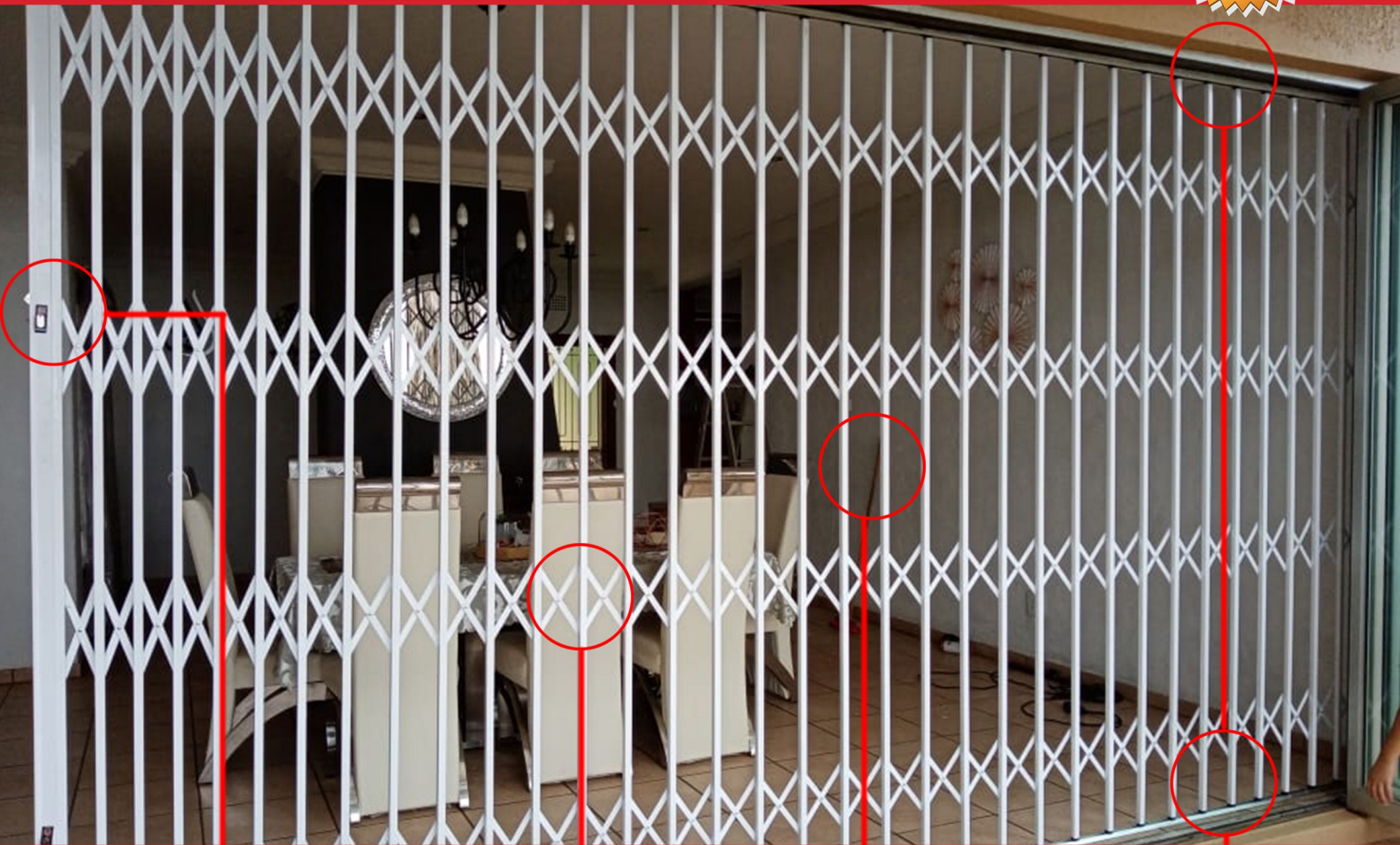
D14 Crime Stopper security gate is our signature product that provides a 10 year guarantee. This "A" grade security level gate is preferred to be used as an outside barrier, providing a double locking protection with a slam and dead lock that ensures fast reaction protection and prevention. The D14 is top of the market when it comes to security and offers you a 5 range colour scheme to choose from. This is a barrier to be reckoned with.  
**SLIDES SMOOTHER & LOCKS FASTER**



**Limax Security Specialists™**  
HOME OF THE  
(PTY) Ltd

**CRIME STOPPER™**  
SECURITY BARRIERS

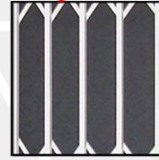
# SU20 SECURITY GATE ENTRY LEVEL SECURITY



**Single Slam Lock**



**Single X Flights  
14x14mm**



**Single Uprights**



**Tuff Nylon Guides**

## Technical Data Sheet and Product Information

- Structure:** Hardened T6063 industrial grade Aluminium extrusion developed under *Limax Trade* and trademarked.
- Operation:** Expandable Trellis concept design - no metal on metal friction.
- Components:** 20x20mm Aluminium uprights, 16x3 Flat strip scissor X pattern, Nylon runners and rollers, Union Locks - 1 x Slam Lock or 1 x Dead Lock option extra.
- Strengths:** Single braced inter linked pattern to hold 1x1 uprights for medium security.
- Corrosion Properties:** Anodized and powder-coated Aluminium gives the SU20 strength.
- Powder Coating Details:** 7 year Collocate warranty on paint. Guaranteed for 5 years!

**Suggested for internal use only.**



Value for Money



No Rust



Casual Security



5 Year Guarantee



Low Maintenance



Quality Paint Finish

The SU20 Security Gate serves as our "C" graded gate and is normally fitted inside. One slam lock provides instant security. No metal to metal moving parts, with nylon guides ensuring easy operation, purpose made to fit any window or door opening. The SU20 is offered in steel or aluminium.

**LIGHT WEIGHT & SMOOTH SLIDING**



**Limax Security Specialists™**  
HOME OF THE  
(PTY) Ltd

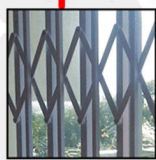
**CRIME STOPPER™**  
SECURITY BARRIERS

# MONKEYPROOF SECURITY GATE

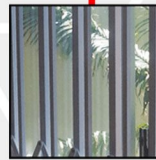
## STOP THEM ENTERING YOUR HOUSE



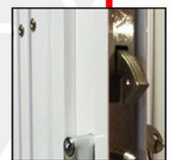
**Tuff Nylon Guides**



**Single X Flights  
14x14mm**



**Narrow Spacing**



**Single Slam Lock**

### Technical Data Sheet and Product Information

<b>Structure:</b>	Hardened T6063 industrial grade Aluminium extrusion developed under <i>Limax Trade</i> and trademarked.
<b>Operation:</b>	Expandable Trellis concept design - no metal on metal friction.
<b>Components:</b>	20x20mm Aluminium uprights, 16x3 Flat strip scissor X pattern, Nylon runners and rollers, Union Locks - 1 x Slam Lock or 1 x Dead Lock option extra.
<b>Strengths:</b>	Single braced inter linked pattern to hold 1x1 uprights with the additional 12x12 square tube upright that split up the spacing to 68-70mm and restrict the spaces for monkeys.
<b>Corrosion Properties:</b>	Anodized and powder-coated Aluminium gives the SU20 strength.
<b>Powder Coating Details:</b>	7 year Collocate warranty on paint. Guaranteed for 5 years!
<b>Suggested for internal use only.</b>	



Keep out Monkeys



No Rust



5 Year Guarantee



Low Maintenance



Quality Powdercoated Finish

A dual purpose solution to you, when living in a monkey infested area. This clever design only available from Crimestopper leaves your doorway opening unaffected with a 40mm space between bars. You can leave your door open with your fruits on the table. One slam lock provides instant security. No metal to metal moving parts, with nylon guides ensuring easy operation, purpose made to fit any window or door opening.

**LIGHT WEIGHT & SMOOTH SLIDING**

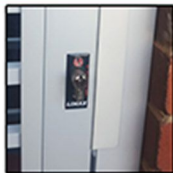


**Limax Security Specialists™**  
HOME OF THE  
(PTY) Ltd

**CRIME STOPPER™**  
SECURITY BARRIERS

# SWING GATES

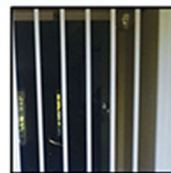
## SECURITY GATES FOR ANY OPENING



Slam lock or deadlock options



X - Flight Design Option



20mm x 20mm Uprights



High Grade Hinges

### Technical Data Sheet and Product Information

- Structure:** Hardened T6063 industrial grade Aluminium extrusion developed under Limax Trade and trademark, 60 x 30 x 2mm thickness.
- Operation:** Swing operation on high grade 100kg friction absorption hinges. Custom made for any reveal size.
- Components:** 20 x 20mm uprights spaced 100mm apart with integrated slam and deadlock system within frame structure, second lock can be requested at an additional charge.
- Strengths:** The construction of this product with internal bolt and tension bars makes it virtually impossible to break it apart. X braces between the uprights add significant value and integrity to the whole design.
- Corrosion Properties:** Anodized and powder coated Aluminium for superior strength
- Details:** 7 year Collocate warranty on paint. Guaranteed for 5 years



Transparent



No Rust



Strong Durable



5 Year Guarantee



Hook Lock



Swing Opener

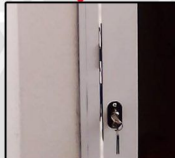
We added the Swing Gate Option in Aluminium into our product range in order to eliminate the problem that people encounter when moving furniture in and out the house. Our Swing Gate option is very favourable solution to keep your whole walk way open with proper security in place. We have a horizontal look, burglar X and the double burglar X look and it compliments our Retractable product range.



Limax Security Specialists™  
HOME OF THE (PTY) Ltd



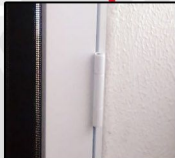
# CLEAR SHIELD SECURITY WITH A VIEW



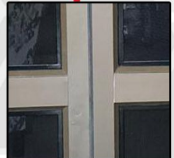
**Slam lock or deadlock options according to design**



**Stainless steel mesh See through**



**High Grade Hinges**



**Standard Colours Mesh comes in black but can be coloured same colour as prime**

## Technical Data Sheet and Product Information

<b>Structure:</b>	Structured T8 Aluminium Extrusion with Stainless Steel mesh insert.
<b>Operation:</b>	Options available: Sliding inside reveal, single slider, double slider, only horizontal sliding options. Hinge opens left and right, stacking sliding options available, spec or patent to follow Aluminium tack door designs. Fixed panels options also available.
<b>Components:</b>	Aluminium T8 6063 Frame(H11800), Aluminium T8 6063 Clips(49209), Latch Lock "5" 25 B5 with Euro Cylinder, Aluminium Drop Bolts (100mm), Bearings (20x8) Stainless Steel Mesh (10 mesh x 0.9 wire x 1300 wide - SS 304)
<b>Strengths:</b>	Steel Mesh and T6 Hardened Aluminium Frame, that keeps insects and criminals out but keeps the view.
<b>Corrosion Properties:</b>	Anodized and powder-coated
<b>Powder Coating Details:</b>	Epoxy Powder Coated Guaranteed for 5 years!



High Strength design



5 Year Guarantee



No Rust



Keep out all intruders and insects



Quality Paint Finish

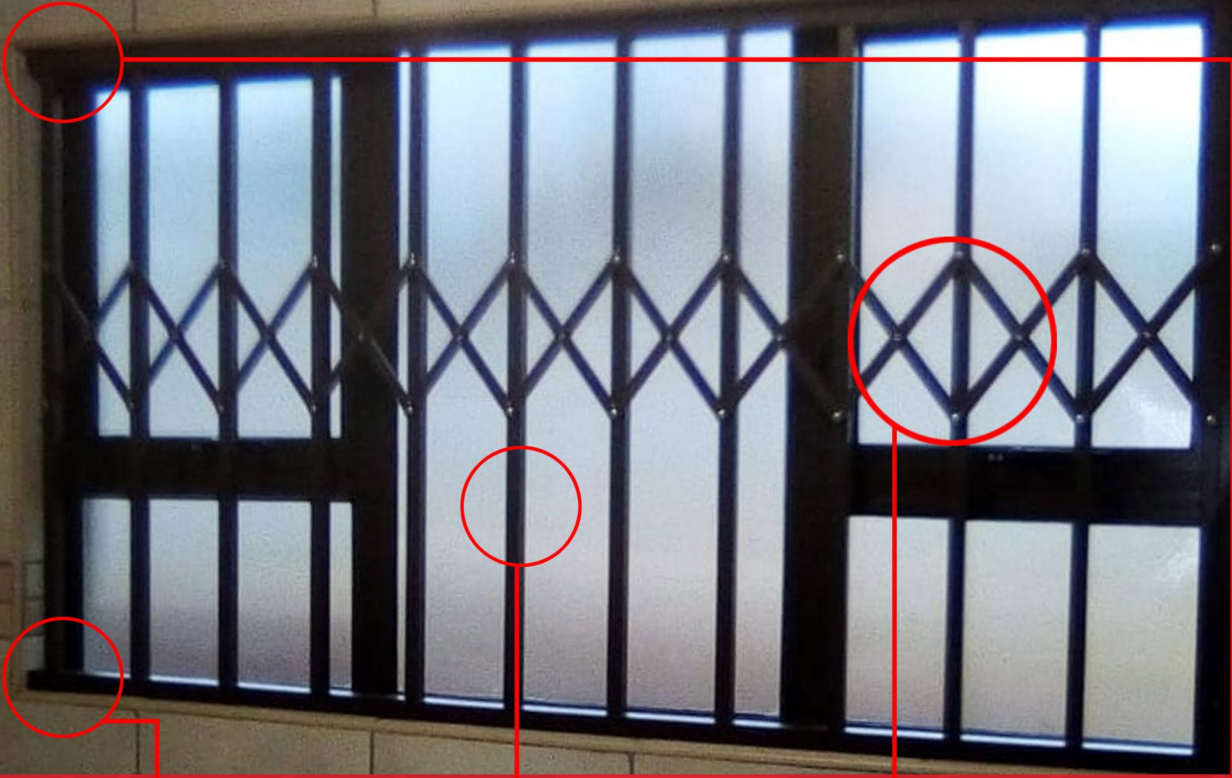
Now leading the security and environment industry with a shield that keeps both creepy and crawlies and unwanted criminals outside. Clear Shield is the modern design in security with high quality stainless steel mesh fitted into aluminium swing or sliding door frame. This product is environment friendly that keeps the smallest insects outside while enjoying the ocean breeze of the African sunset. This product comes in different colours that suites your style.



**Limax Security Specialists™**  
HOME OF THE  
(PTY) Ltd



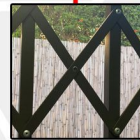
# BX WINDOW GUARD VERSATILE MODULAR SYSTEM



**Hidden  
in reveal**



**Single  
Uprights**



**Single X Flights  
14x14mm**



**No moving  
parts**

## Technical Data Sheet and Product Information

<b>Structure:</b>	Hardened T6063 industrial grade Aluminium extrusion developed under <i>Limax Trade</i> and trademarked.
<b>Operation:</b>	Modular system assembled into the window reveal. Mounts onto the reveal directly into the brickwork as standard fitments instruction. Fitted with 75mm x 8mm coat screws and plugs.
<b>Components:</b>	19x19mm x 2mm Aluminium uprights, 16x3 Flat strip scissor X pattern, Screws are covered by a special designed cover clip, that conceals all fixing methods.
<b>Strengths:</b>	Very versatile product, can fit any size window and any special sized can be requested. No moving parts
<b>Corrosion Properties:</b>	Anodized and powder-coated Aluminium gives the BX superior strength.
<b>Powder Coating Details:</b>	7 year Collocate warranty on paint. Guaranteed for 5 years!



No  
Rust



5 Year  
Guarantee



No Screws  
Visible



Fixed All  
Sizes



Quality  
Finish

Affordable, safe, strong modular guards that secures your family 24/7. With our standard 5 year warranty rust free Aluminium. The Burglar X is our most popular burglar guard that fits in any window size. Our burglar guards comes with a industry quality warranty and a range of powder coated colors to choose from.



**Limax Security Specialists™**  
HOME OF THE  
(PTY) Ltd

**CRIME STOPPER™**  
SECURITY BARRIERS

# BXX WINDOW GUARD VERSATILE MODULAR SYSTEM



**Hidden  
in reveal**



**Single  
Uprights**



**Double X Flights  
14x14mm**



**No moving  
parts**

## Technical Data Sheet and Product Information

<b>Structure:</b>	Hardened T6063 industrial grade Aluminium extrusion developed under <i>Limax Trade</i> and trademarked.
<b>Operation:</b>	Modular system assembled into the window reveal. Mounts onto the reveal directly into the brickwork as standard fitments instruction. Fitted with 75mm x 8mm coat screws and plugs.
<b>Components:</b>	19x19mm x 2mm Aluminium uprights, 16x3 Flat strip scissor X pattern, Screws are covered by a special designed cover clip, that conceals all fixing methods.
<b>Strengths:</b>	Very versatile product, can fit any size window and any special sized can be requested. No moving parts
<b>Corrosion Properties:</b>	Anodized and powder-coated Aluminium gives the BX superior strength.
<b>Powder Coating Details:</b>	7 year Collocate warranty on paint. Guaranteed for 5 years!



No Rust



5 Year Guarantee



No Screws Visible



Fixed All Sizes



Quality Finish

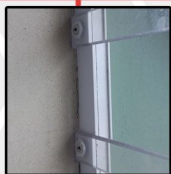
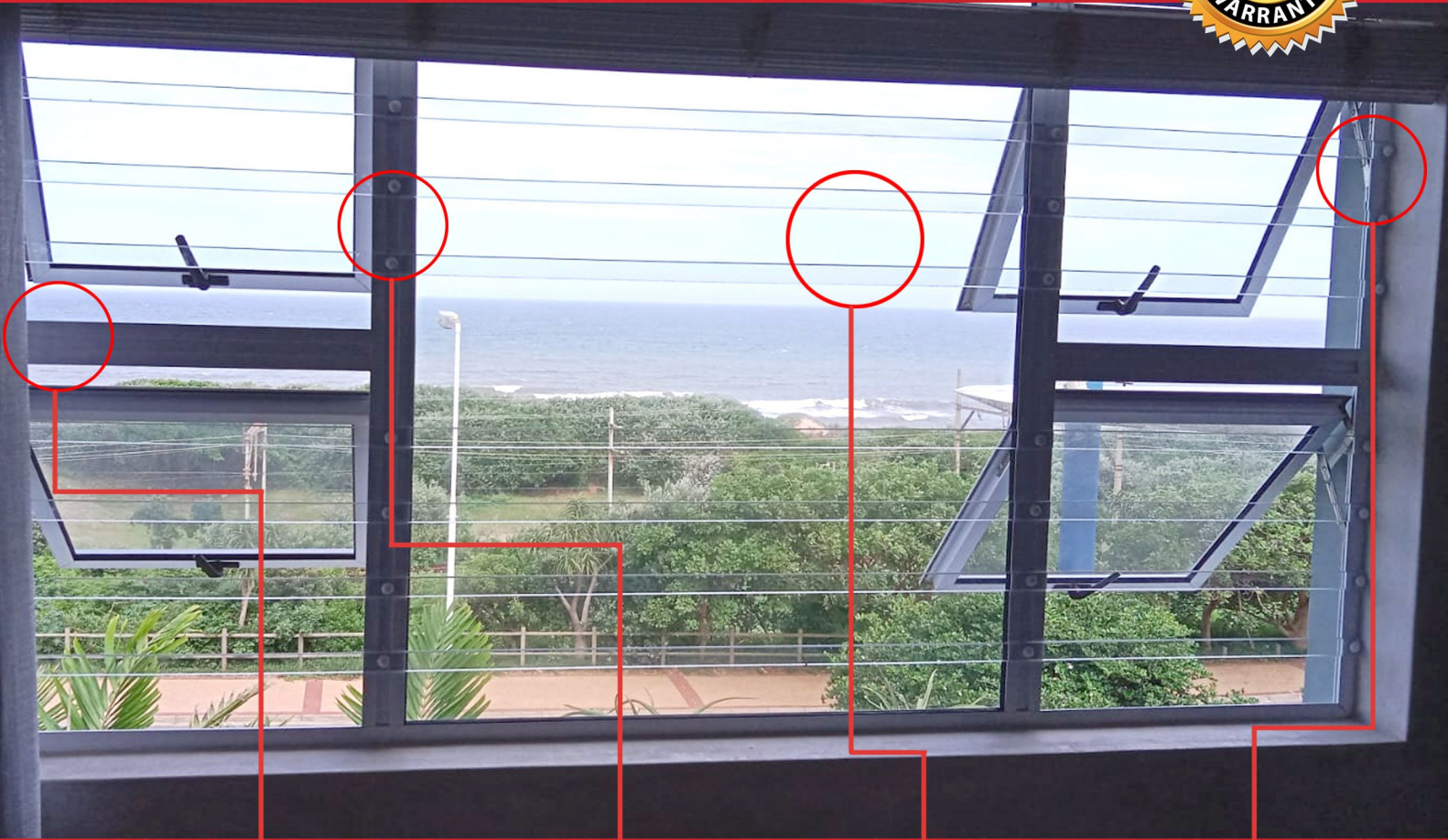
Affordable, safe, strong modular guards that secures your family 24/7. With our standard 5 year warranty rust free Aluminium. The Burglar X is our most popular burglar guard that fits in any window size. Our burglar guards comes with a industry quality warranty and a range of powder coated colors to choose from.



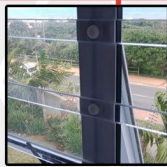
**Limax Security Specialists™**  
HOME OF THE  
(PTY) Ltd

**CRIME STOPPER™**  
SECURITY BARRIERS

# CLEARVIEW BARS SECURITY WITH A VIEW



Adjustable bars allow for customized gaps



Tamper-proof fixing system



UV Resistant, transparent polycarbonate panels



Window handles and hinges easily accommodated

## Technical Data Sheet and Product Information

- Structure:** UV resistant, lightweight, transparent Polycarbonate clear view bars.
- Operation:** Clear view bars fixed onto widow frame at multiple points using unique tamper-proof fixing system with variable spacing options.
- Components:** Standard width of 32mm and standard thickness of 6.3mm.
- Strengths:** Polycarbonate bars are a tough, transparent, UV resistant plastic material that has outstanding strength, stiffness and impact resistance.



Very Strong



No Rust



5 Year Guarantee



Transparent



SIRA Approved



Linked with Alarm

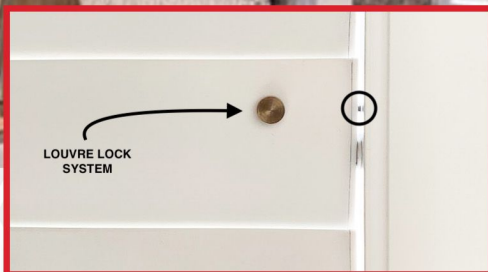
Imagine surprising an unwanted visitor with our exclusive industry first. Clearview Bars are Aluminium Alloys with Poly-carbonate enforced clear strips made from the same material as riot protection gear. This product has the strength to keep your home safe and gives your window that futuristic modern look and provides a barrier for unwanted visitors.



Limax Security Specialists™  
HOME OF THE  
(PTY) Ltd

**CRIME STOPPER**  
SECURITY BARRIERS

# LOUVER SHUTTERS



## Technical Data Sheet and Product Information

- Structure:** Made of aluminium and fully rust proof components (plastic and stainless steel). They can be used for both indoor and outdoor applications.
- Operation:** The lock is a single twist operation, throwing a 60mm throw bolt, both into the top track and the bottom track. (Further Security can be added in throwing the bolt through the tracks into the floor and lintels)
- Components:** Integrated louver lock, as an option. Hidden 'tilt rod' in the form of rack and pinion system, to operate the louvers
- Strengths:** Security locking mechanism, 60mm stainless steel bolt-throw top and bottom.
- Corrosion Properties:** Anodized and powder coated Aluminium for superior strength

Louver shutters are ideal for light, wind and ventilation control. Not only do they enhance the aesthetic appeal of your home, they will also increase the value. Available in standard colours (matt white and matt stone grey) and carries the full Limax guarantee.



**Limax Security Specialists™**  
HOME OF THE  
(PTY) Ltd

**CRIME STOPPER™**  
SECURITY BARRIERS

# BLINDS



## Technical Data Sheet and Product Information

- Structure:** Various materials are used to manufacture depending on design and style for your home or business.
- Operation:** Louver twist, chain operation or automated blinds.
- Components:** Blind holder brackets, chain wheels, fabric, metal, aluminium or wooden dependant on design.
- Details:** Blinds can be fixed inside reveal or fit on face depending on Site Application or Client vision.

### Some of the different types of blinds that Limax may offer include:

- Vertical blinds:** These are a popular option for larger windows or sliding doors, as they can be opened or closed to allow access to the door while still providing privacy and light control.
- Roller blinds:** These are a simple and versatile option that can be made from a variety of materials, including blackout fabric for bedrooms or sheer fabric for a softer look.
- Venetian blinds:** These are a classic option that features horizontal slats that can be adjusted to control the amount of light and privacy.
- Roman blinds:** These are a more decorative option that can add a touch of elegance to a room. They are made from soft fabric and can be raised or lowered to control light and privacy.

Blinds are a popular window covering option that can provide privacy, light control, and aesthetic appeal to a room. Limax offers a range of different blind styles and materials to suit different needs and preferences.

When purchasing blinds from Limax, customers can expect to receive expert advice on selecting the best type of blinds for their windows. The company also offers a professional installation service, ensuring that the blinds are installed securely and correctly for optimal performance.



**Limax Security Specialists™**  
HOME OF THE  
(PTY) Ltd

**CRIME STOPPER™**  
SECURITY BARRIERS

# AWNINGS COVER YOUR VALUABLE ASSETS



## Technical Data Sheet and Product Information

- Chromobond – 5-10 year guarantee.
- Aluminium Industrial 7 for Coastal conditions
- Full all-round Guttering
- Plastic down pipes
- 75mm Poles
- 100mm-150mm Lib Channels
- All white or Galvanized
- Opal Polypropylene sheets available where you need natural sunlight
- Structure integrity design done per project



No Rust



Light Weight



10 Year Guarantee



Low Maintenance



Colour Coated

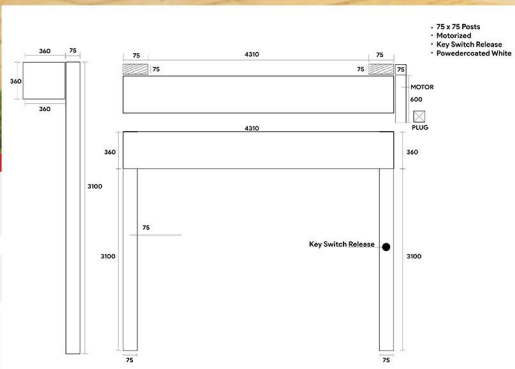
Awnings that are high quality and all-aluminium. They are lightweight and require very little maintenance. Our design features make for simplicity and ease of installation.



**Limax Security Specialists™**  
HOME OF THE  
(PTY) Ltd

**CRIME STOPPER™**  
SECURITY BARRIERS

# ROLLER SHUTTERS ABSOLUTE SECURITY!



## Technical Data Sheet and Product Information

- Structure:** Galvanized steel options or Hardened option slatted rollup shutter door for domestic and industrial use.
- Operation:** Available methods are motorized option, chain drive option, hand chain option and a crank gearbox operation system.
- Components:** Product consists of a round shaft where are the curtain slats combine as a cylinder on the top. Cover box covers the operation method. The side guides differ between the widths of the doors opening sizes as you will receive a 50mm, 75mm or 150mm side guides to accommodate wind pressure and door height depending on the size of the door. Standard industrial doors are normally supplied in a galvanized finish with the option of powder coating in various colours.
- Details:** Standard Roller shutter guarantee is 5 years with service intervals of 6 months. All motor operation have a 1 year guarantee.



High strength Industrial Finish



No Rust



Motorized



Chain / Manual Operation



Quality Powder coated or Galvanized Finish

Roller Shutters is so underrated in South Africa. In every country this is your basic part of security and comfort. The product has so many uses and you might have seen it on Shopfronts and Workshops but the home industry has now added it to their home for security and comfort. We offer all the options from our transparent "Poly Clear Shutter"; Aluminium Solid Slatted or Window Shutter and Perforated Steel. So which ever you choose, we supply and install.



**Limax Security Specialists™**  
HOME OF THE  
(PTY) Ltd

**CRIME STOPPER™**  
SECURITY BARRIERS

# GARAGE DOORS



## Aluminium and Cromadex Fluted Sectional Garage Doors

Garage doors represent a major proportion of the aesthetic appeal and architectural design of a home. In fact, the choice you make can play a considerable role in the resale value of your property. Our range of Aluminium and Cromadex Sectional Garage Doors is not only aesthetically appealing, but low maintenance. They can be custom made and painted to any shade to suit the style and design of your home.

### Aluminium Sectional Garage Doors

Aluminium Sectional garage doors are an innovative design, which has proven itself worldwide as a superior garage door option. The garage doors are made up of sectional panels, which facilitate easy operation. The steel construction also provides as a strong durable door which will not chip or crack. Our standard garage doors are painted white. You may consider customising your home by adding colour to your garage doors.



Besides their visual appeal, all Limax Sectional Garage Doors are packed with under-the-skin strength, safety and security features. They are low maintenance and can be custom-made and painted to suit the appearance of any architectural style.



**Limax Security Specialists™**  
HOME OF THE  
(PTY) Ltd

**CRIME STOPPER™**  
SECURITY BARRIERS

# DRIVEWAY GATES



## Technical Data Sheet and Product Information

- Structure:** Various materials used in the production of Driveway Gates from Stainless Steel, Wooden Slatted, Full Aluminium, Laser Cut designs and more.
- Operation:** Motor or manually operated. Motor size varies dependant on the size of the gate.
- Components:** Gate, Frame, Portholes, Track and Wheels.
- Details:** We advise you find our design to suite your persona and we will do the rest.

Driveway gates can provide an added layer of security and privacy to a property by controlling access to the driveway. Limax Security offers a range of driveway gates, including automatic gates that can be controlled remotely, as well as manual gates that can be opened and closed by hand.

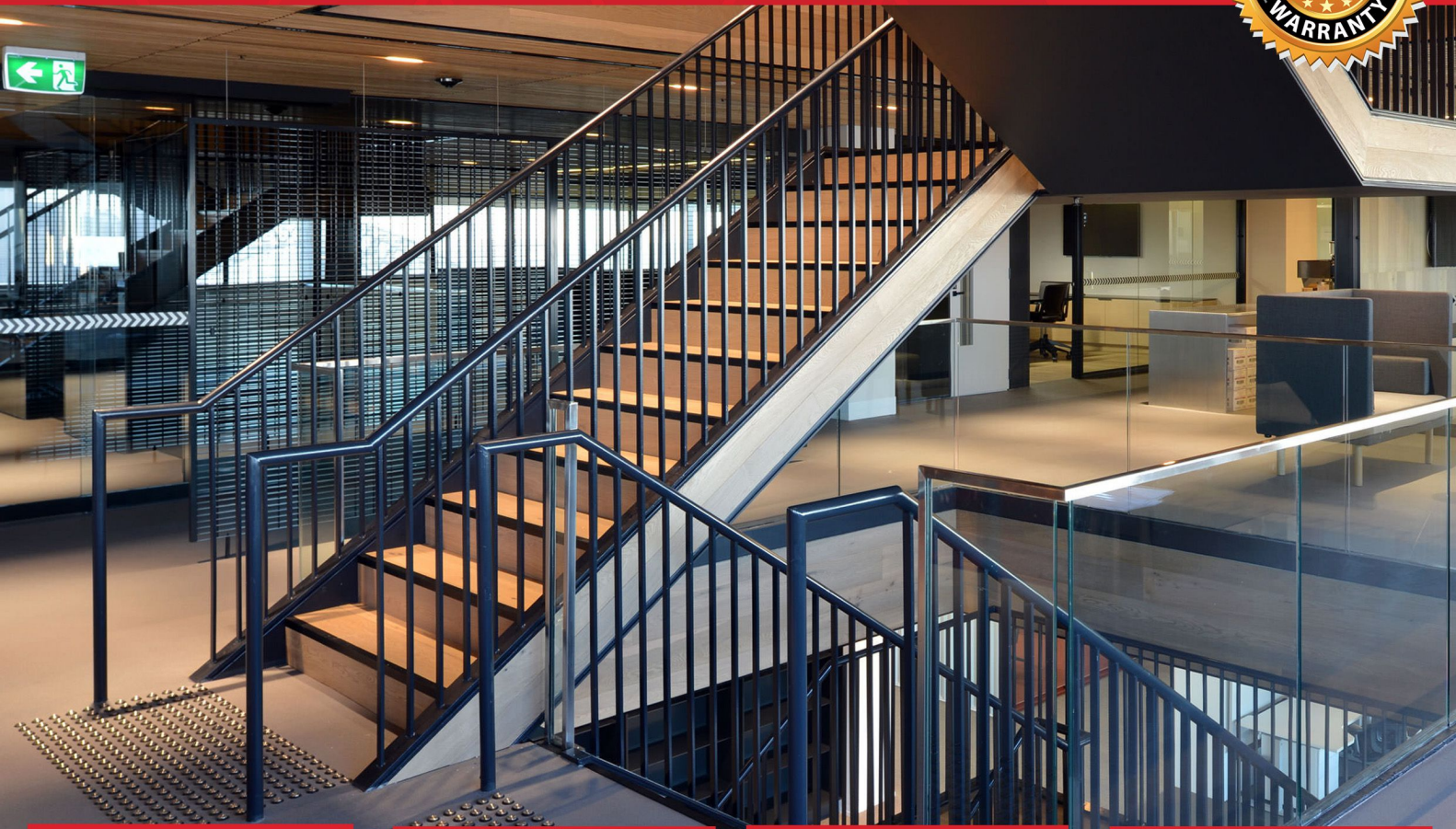
When it comes to installation, Limax Security's team of professionals can assess the property and determine the best type of gate for the location. They can also install the gate and any necessary hardware, such as gate openers, sensors, and intercom systems, to ensure the gate functions properly and provides the desired level of security.



**Limax Security Specialists™**  
HOME OF THE  
(PTY) Ltd

**CRIME STOPPER™**  
SECURITY BARRIERS

# BALUSTRADES



## Technical Data Sheet and Product Information

**Structure:** Stainless steel, Aluminium, Steel design and more are available with various design options from cable to glass, Laser cut and bespoke designs.

**Components:** Hand rails, Balustrades, Full Glass or Glass inserted holders dependant on design and specifications.

Balustrades options only start when your imagination begins to run out. Let us design your ultimate trimming finish to an awesome balcony with a view or a staircase to heaven in Aluminium, Stainless Steel or Wrought Iron designs. The Balustrades are designed to fit the most Modern Loft or an Italian Rustic Home, we will be your safety guard rail.



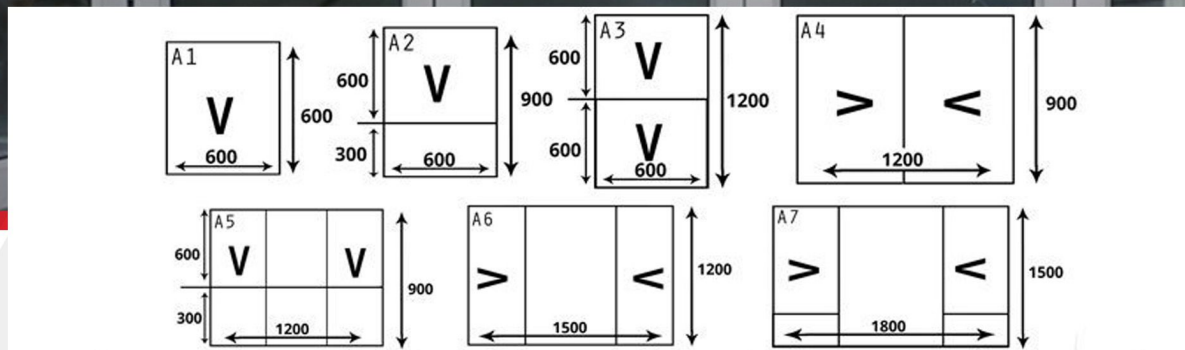
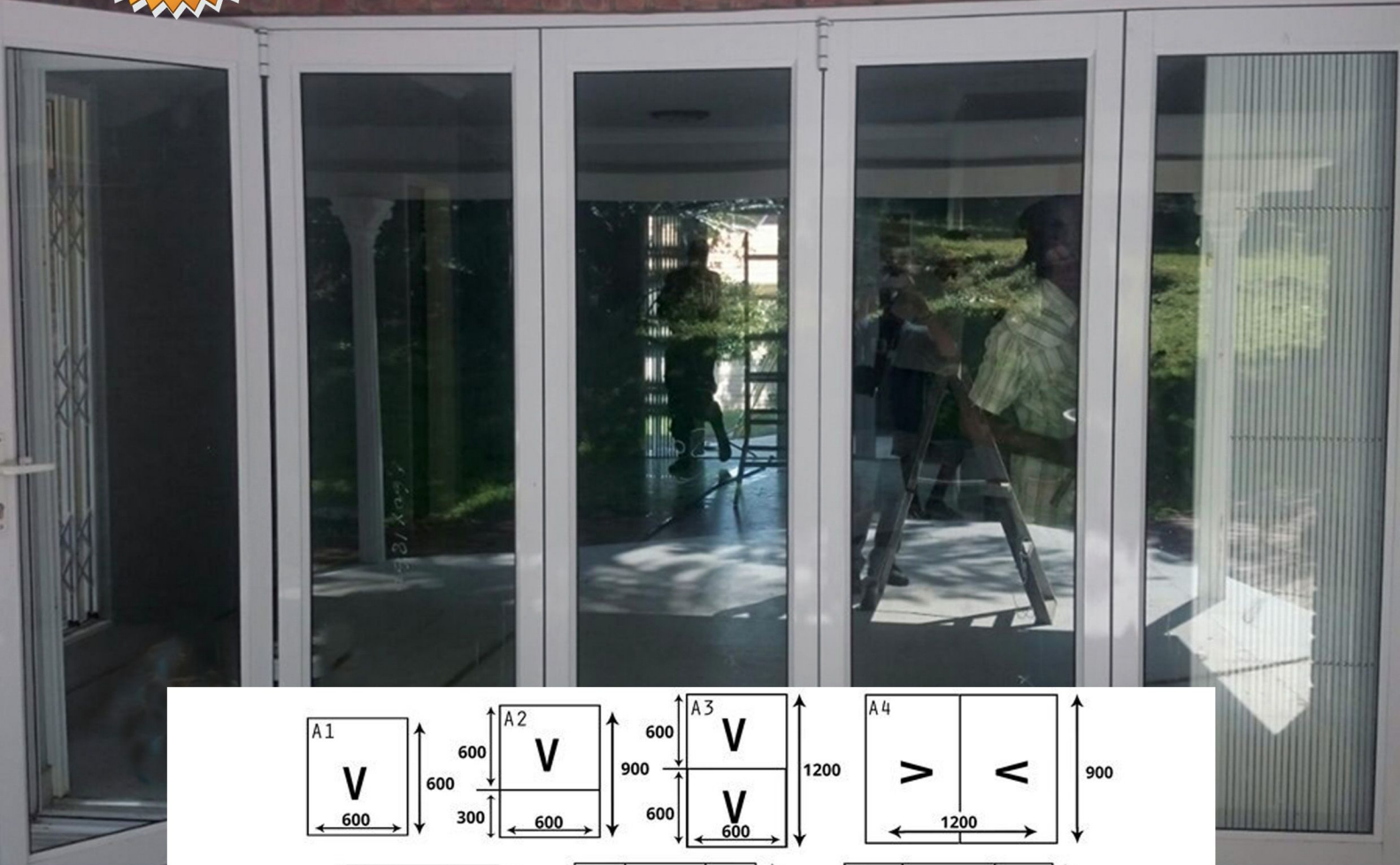
**Limax Security Specialists™**  
HOME OF THE  
(PTY) Ltd

**CRIME STOPPER™**  
SECURITY BARRIERS



# GLASS & ALUMINIUM

## WE MANUFACTURE A WIDE VARIETY OF PRODUCTS AND SIZES



### Technical Data Sheet and Product Information

Range of Colours

5 year guarantee

Manufactured according to specification

No import inferior material used

High quality finish

SAGGA approved manufacturer



Available in white and bronze special colors on request



5Year Guarantee



Manufactured of your specifications



No import inferior material used



High Quality Finish

We manufacture and install a variety of Aluminium doors, windows, including stack away doors, double Glazing and standard sliding doors.

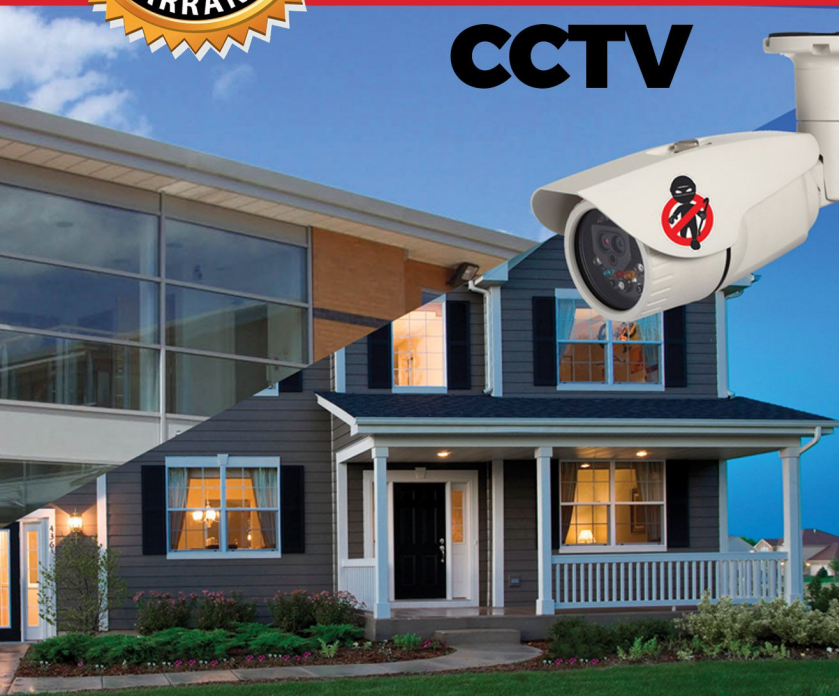


Limax Security Specialists™  
HOME OF THE  
(PTY) Ltd

**CRIME STOPPER**  
SECURITY BARRIERS



# CCTV & E-GUARD



## CCTV

We supply a variety of brand names, our representatives will give you more information after a site inspection.

### SPECIFICATIONS

- 8 / 12 / 16 / 32 Channels
- Self Monitored
- Recording – External Harddrive
- Features – Alarm / Set / Motion
- Low energy requirements
- Screens available on request.

STANDARD INDOOR / OUTDOOR



IP



DRONE



Technical Data Sheet and Product Information

- Warning Signs
- Weather proof
- Recorded footage
- Remote viewing
- Special Packages



WARNING CCTV



Weather Proof



Recording Footage



Remote View on Phone



Special Packages

Replace human error and save money. 24 hours, No intervals, No lunch times.  
 You can monitor all cameras yourself.  
 Free monthly service checks – Remotely  
 Limit less units = Add on cameras  
 Accessories available: Siren, Speaker, Pepper Spray Gas Alarm.  
 Technical Data Sheet and Product Information

- Un-breakable / very durable
- 24h control room monitoring
- 4-6 years battery life
- 10 year guarantee on installment
- Off-site monitoring



UN-Breakable very durable



24h control room monitoring



4-6 year Battery



Guarantee on product installation



Off site monitoring



## E-GUARD 24H CCTV MONITORING SYSTEM

Limax Louver Shutters are ideal for light, wind and ventilation control. Not only do they enhance the aesthetic appeal of your home, they will also increase the value.

Louwer shutters are made of aluminium and fully rust proof components (plastic and stainless steel). They can be used for both indoor and outdoor applications.



Limax Security Specialists™ (PTY) Ltd



Questions?

**CONTACT US NOW**

[www.limax.co.za](http://www.limax.co.za)

Limax KZN (HQ)



1 Gordon Rd, Winkelspruit  
Amazimtoti, KZN



info@limax.co.za  
quoteme@limax.co.za



031 916 2306  
082 226 3773

Limax JHB



Unit 11, 20 Van Wyk Road,  
Great North Industrial Park,  
Kempton Park, GP



frans@limax.co.za  
gpadmin@limax.co.za



082 373 8483



**Limax Security Specialists**  
(PTY) Ltd



HOME OF THE  
**CRIMIE STOPPER**  
SECURITY BARRIERS